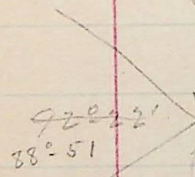
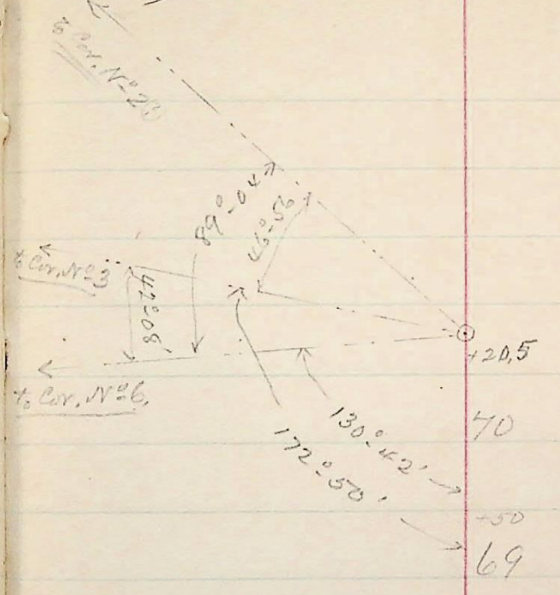


547:22 E 290.3 5196.9 210.7  
 572:22 S 189 557.2 E 180.1  
 581:23 E 870 5264.6 E 161.4  
 548:24 E 1107.6 5121.2 E 127.3  
 = Cor. No 30.  
 N 66:54 E 194.1 E 220.6  
 - Cor. No 29  
 544.1.7 E 199.  
 S 8:47 N 58:18 E.

Angle left



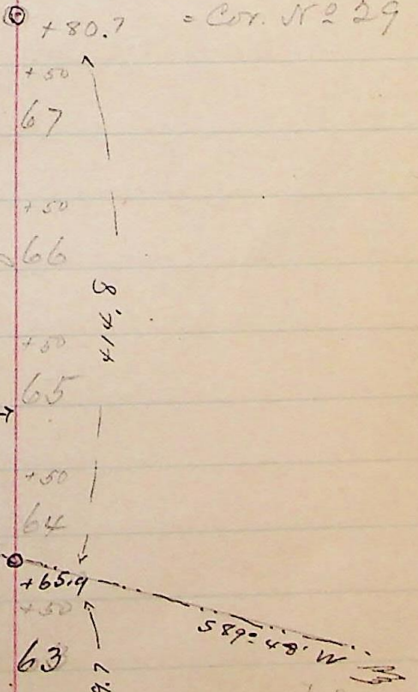
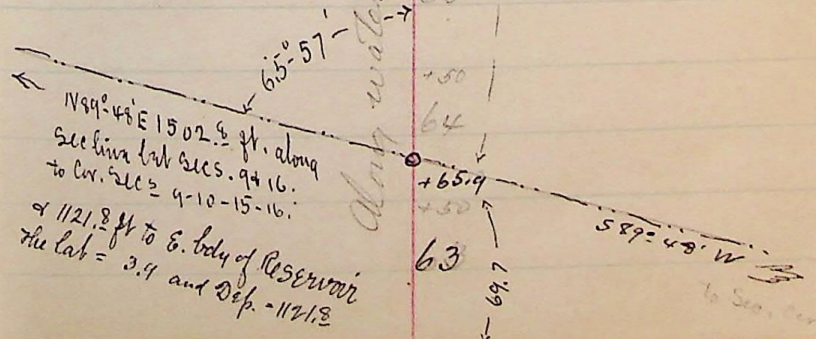
(10)



Reservoir Covers an area  
 of 49.14 acres.  
 34.40 acres in Sec. 9.  
 14.74 " " " 16  
 49.14 total.

= Cor. No 30.  
 Rem. line fixed by  
 Triangulation from line 243  
 Vig - Secs 31-32-33-34-41.  
 See page (1)

Along water line of Reservoir



3  
0  
3  
9  
4  
7  
0